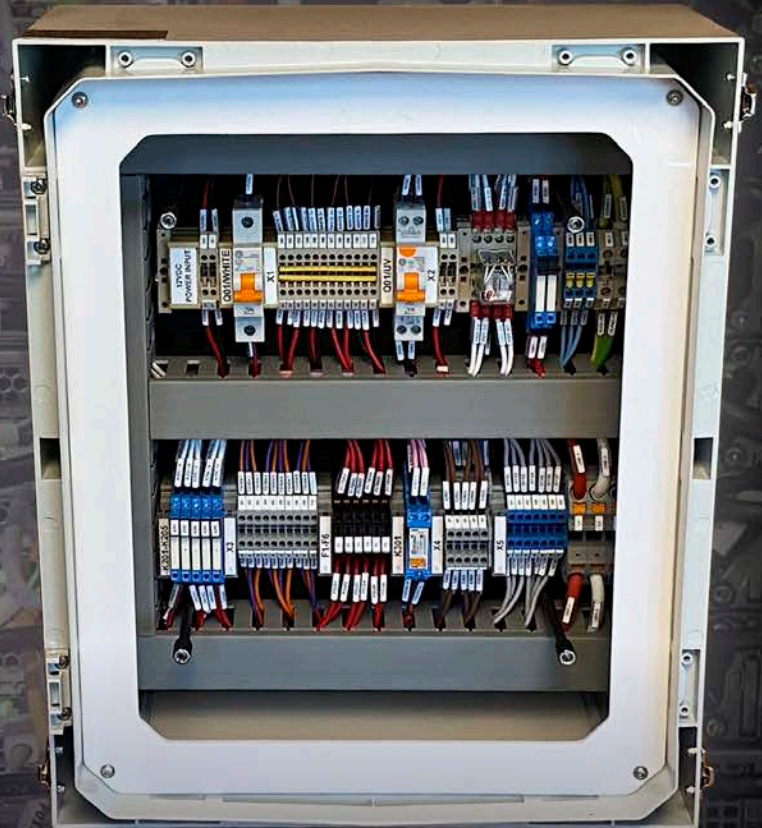
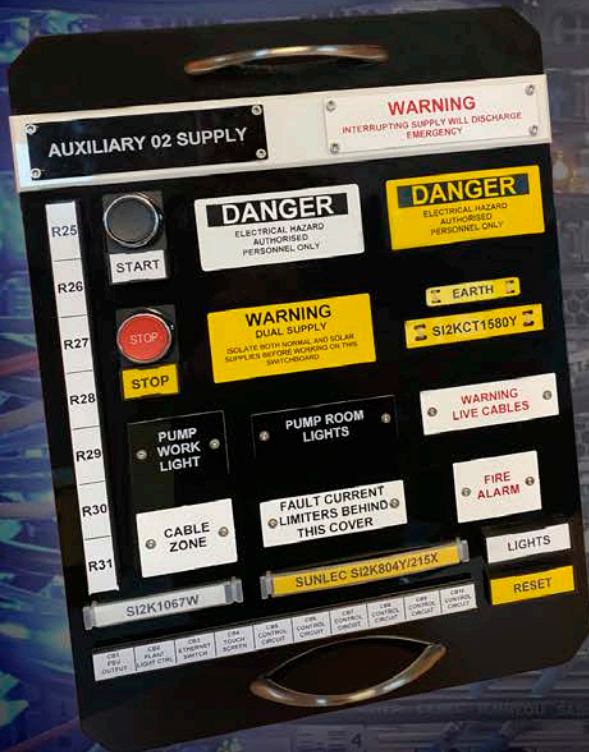


Grafoplast®

WIRE MARKERS



Grafoplast® - Leaders in Wire Marking & Cable Marking

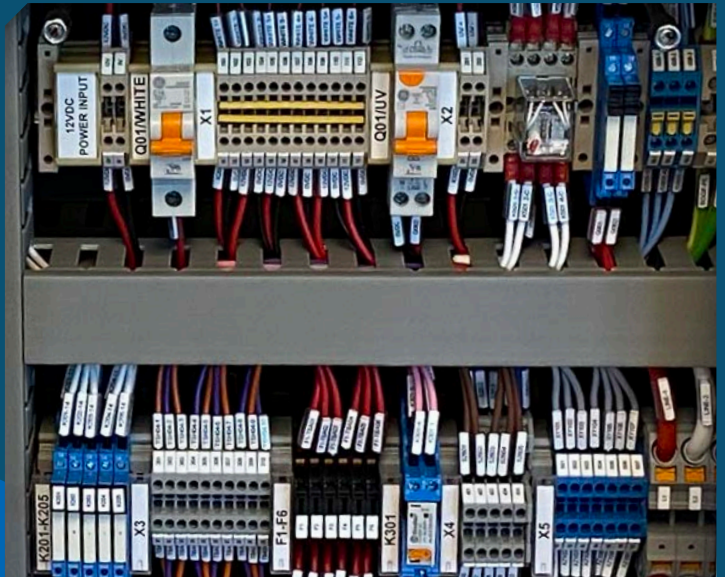
USA

1-800-864-3874 | grafoplast.com | sales@grafoplast.com

**WE DEAL DIRECT,
WE DELIVER 2ND DAY AIR,
WE PAY THE FREIGHT!**



TRASP MARKING SYSTEM



IN HOUSE MARKING SERVICE



EVOMAX THERMAL PRINTER

 **Grafoplast®**

QUICK AND EASY TO APPLY

LASTS FOREVER

**THE ONE SYSTEM FOR
EVERY APPLICATION**

TRASP MARKING SYSTEM

04

The ultimate manual wiremarking system for every size wire/cable.



EVOMAX THERMAL PRINTER

16

High resolution print. Low maintenance. Backup support eliminates downtime.



METAL DETECTABLE

30

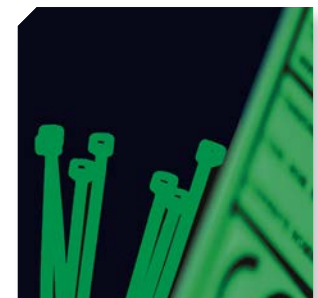
Metal detectable marking for use in the food, pharmaceutical and cosmetic industries.



UV TECHNOLOGY SERIES

32

Made of photoluminescent and phosphorescent materials to give maximum visibility in the dark.



IN HOUSE MARKING SERVICE

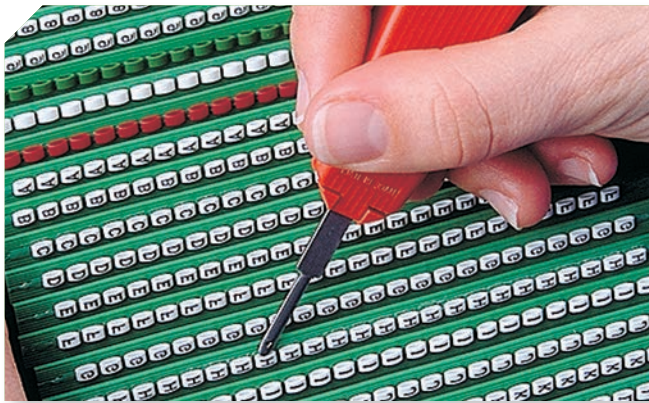
34

We'll mark it for you. Free delivery.

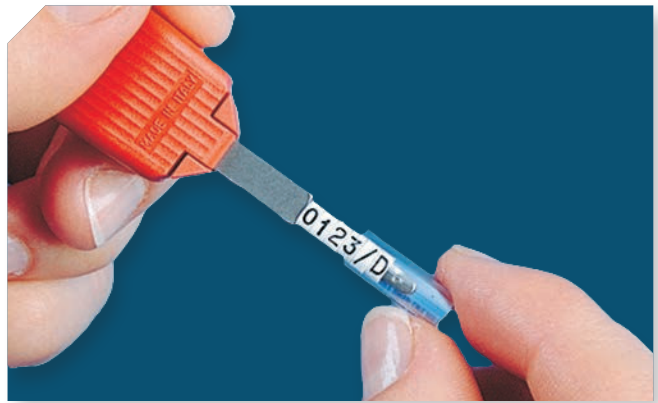


4 Easy Steps

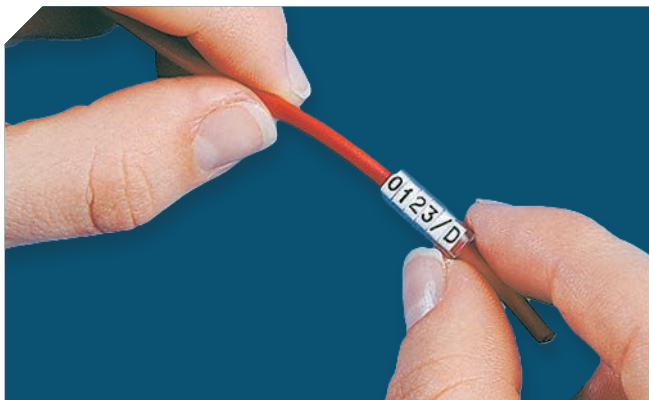
For The Ultimate Wiremarking System



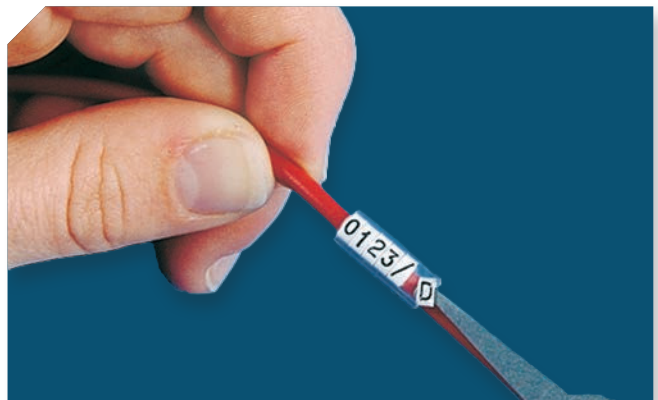
Step 1 Collect the marking elements on the applicator



Step 2 Insert elements into the sleeve



Step 3 Slide sleeves on to wire



Step 4 Marking elements can be added or removed as required with removal hook

The ultimate wire marker at an ordinary price.



\$1392

001SK/03

STARTER KIT

The best choices for starting with the Grafoplast system.

CONTENTS:

PART #	QTY	DESCRIPTION
118	2	Strip Tray
119/15U	1	Marking Applicator Tool
119/30U	1	Marking Applicator Tool
120	1	Removal Hook

STRIPS INCLUDED:

24 characters per strip

PART #	QTY	PART #	QTY
117MAABW	10	117M00BW	10
117MBBBW	10	117M01BW	10
117MCCBW	10	117M02BW	10
117MDDBW	10	117M03BW	10
117MEEBW	10	117M04BW	10
117MFFBW	10	117M05BW	10
117MGGBW	10	117M06BW	10
117MHBBW	10	117M07BW	10
117MIIBW	10	117M08BW	10
117MJJBW	10	117M09BW	10
117MKKBW	10	117M10BW	10
117MLLBW	10	117M11BW	10
117MMMBW	10	117M12BW	10
117MNNBW	10	117M13BW	10
117MOOBW	10	117M999B	10
117MPPBW	10	117M999R	10
117MQQBW	10	117M999G	10
117MRRBW	10	117M999Y	10
117MSSBW	10	117M999U	10
117MTTBW	10		
117MUUBW	10		
117MVVBW	10		
117MWWBW	10		
117MXXBW	10		
117MYYBW	10		
117MZZBW	10		

SLEEVES INCLUDED:

PART #	QTY
102/15	1000



\$622

050C/03 BIS

TRASP CASE

"Field Friendly" - the best choice for field work.

CONTENTS:

PART #	QTY	DESCRIPTION
118	2	Strip Tray
119M/15	1	Marking Applicator Tool with handle
119M/30	1	Marking Applicator Tool with handle
120	1	Removal Hook

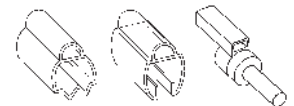
STRIPS INCLUDED:

24 characters per strip

PART #	QTY	PART #	QTY
117MAABW	2	117M00BW	4
117MBBBW	2	117M01BW	4
117MCCBW	2	117M02BW	4
117MDDBW	2	117M03BW	2
117MEEBW	2	117M04BW	2
117MFFBW	2	117M05BW	2
117MGGBW	2	117M06BW	2
117MHBBW	2	117M07BW	2
117MIIBW	2	117M08BW	2
117MJJBW	2	117M09BW	2
117MKKBW	2	117M10BW	2
117MLLBW	2	117M11BW	2
117MMMBW	2	117M12BW	2
117MNNBW	2	117M13BW	2
117MOOBW	2	117M14BW	1
117MPPBW	2	117M29BW	2
117MQQBW	2	117M33BW	1
117MRRBW	2	117M999B	2
117MSSBW	2	117M999G	2
117MTTBW	2	117M999N	1
117MUUBW	2	117M999R	2
117MVVBW	2	117M999U	2
117MWWBW	2	117M999Y	2
117MXXBW	2		
117MYYBW	2		
117MZZBW	2		

SLEEVES INCLUDED:

PART #	QTY	PART #	QTY	PART #	QTY
101/15	100	150/15	10	301/15	30
102/15	100	150/30	10	302/15	30
103/15	90	161/25	2	303/30	15
108/15	40	175E/15	2	304/30	15
130/30	10	175H/15	2	710/07	50
140/15	20	175L/15	2	710/15	50
140/30	20	190/05	50	710/25	50
142/15	2	190/10	30		
142/30	2	190/15	30		



INTRODUCTORY KITS



\$282

012C/03

TRASP BOX

For the smaller user, primarily using numbers

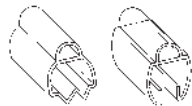
CONTENTS:

PART #	QTY	DESCRIPTION
118	1	Strip Tray
119/15U	1	Marking Applicator Tool
119/30U	1	Marking Applicator Tool
120	1	Removal Hook

STRIPS INCLUDED:

24 characters per strip

PART #	QTY	PART #	QTY
117MAABW	1	117M06BW	1
117MBBBW	1	117M07BW	1
117MCCBW	1	117M08BW	1
117MDDBW	1	117M09BW	1
117M00BW	3	117M10BW	1
117M01BW	3	117M11BW	1
117M02BW	3	117M13BW	1
117M03BW	2		
117M04BW	2		
117M05BW	1		



SLEEVES INCLUDED:

PART #	QTY	PART #	QTY
101/15	70	140/30	1
101/30	25	142/15	1
102/15	70	142/30	1
102/30	30	301/15	10
103/15	60	302/15	10
103/30	30	303/30	5
104/15	60	304/30	5
104/30	30	804/15	1
140/15	1	804/30	1



\$223

012A

TRASP BOX

CONTENTS:

PART #	QTY	DESCRIPTION
118	1	Strip Tray
119/15U	1	Marking Applicator Tool
119/30U	1	Marking Applicator Tool
120	1	Removal Hook



\$282

013A

TRASP BOX

CONTENTS:

PART #	QTY	DESCRIPTION
118	2	Strip Tray
119/15U	1	Marking Applicator Tool
119/30U	1	Marking Applicator Tool
120	1	Removal Hook



\$445

050A

TRASP BOX

CONTENTS:

PART #	QTY	DESCRIPTION
118	2	Strip Tray
119M/15	1	Marking Applicator Tool With Handle
119M/30	1	Marking Applicator Tool With Handle
120	1	Removal Hook

ORDERING CODE

PART NUMBER
All marking element strips are part number 117

WIDTH
Medium = **M**
Grande = **G**

N° OF CHARACTERS PER SLEEVE

MARKING ELEMENT SIZE	SLEEVE LENGTH(mm)			
	10	15	23	30
117M Medium 2.3mm	4	6	10	13
117G Large 3mm	3	5	7	10

COLOUR COMBINATIONS
BW = Black print on white background
BY = Black print on yellow background

EXAMPLES

117 M AA BW	medium letters	A	black character on white	
117 M 01 BW	medium numbers	1	black character on white	
117 G KK BY	large letters	K	black character on yellow	
117 G 06 BY	large numbers	6	black character on yellow	



CHARACTER VARIATIONS

Your choice of alpha, numeric, symbols and colours

ALPHA	NUMERIC	SYMBOLS
A = AA	0 = 00	+ = 10
B = BB	1 = 01	- = 11
C = CC	2 = 02	\perp = 12
D = DD	3 = 03	/ = 13
E = EE	4 = 04	· = 14
F = FF	5 = 05	▲ = 15
G = GG	6 = 06	λ = 16
H = HH	7 = 07	~ = 17
I = II	8 = 08	= = 18
J = JJ	9 = 09	Ω = 19
K = KK		* = 20
L = LL		(= 21
M = MM) = 22
N = NN		, = 23
O = OO		ρ = 28
P = PP		∅ = 29
Q = QQ		∴ = 33
R = RR		÷ = 34
S = SS		→ = 35
T = TT		← = 36
U = UU		↓ = 38
V = VV		# = 39
W = WW		" = 49
X = XX		
Y = YY		
Z = ZZ		

PLAIN COLOURS

Black = 117M999B
Grey = 117M999E
Green = 117M999G
Brown = 117M999N
Orange = 117M999O
Pink = 117M999P
Red = 117M999R
Blue = 117M999U
Violet = 117M999V
White = 117M999W
Yellow = 117M999Y

INTERNATIONAL COLOUR CODES

0 = 117M00WB
1 = 117M01WN
2 = 117M02WR
3 = 117M03BO
4 = 117M04BY
5 = 117M05WG
6 = 117M06WU
7 = 117M07WV
8 = 117M08WE
9 = 117M09BW

STANDARD PACK

1200 ELEMENTS
Marking Elements 50 strips x 24 elements = 1200 pieces one character per pack.



BLISTER PACK

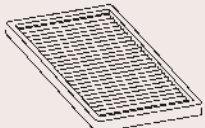


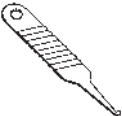
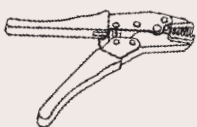

240 ELEMENTS
Marking Elements 10 strips x 24 elements = 240 pieces one character per pack.
Minimum purchase 5 packs.

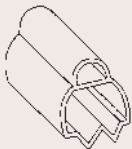
NOTE: Supplied in medium width, in black characters on white background in numbers, letters, +, -, \perp and symbols only.

EXAMPLE ORDER CODES:

BL 117MAABW = medium letters, character: A, black characters on white
BL 117M01BW = medium numbers, character: 1, black characters on white


ACCESSORIES

ITEM	PRODUCT CODE	DESCRIPTION	QTY	PRICE
Strip Tray				
	118	Strip Tray Holds 25 Strips	1 piece	74.00
Marking Tools				
	119/15U	15mm Marking Element Applicator	5 pieces	98.00
	119/30U	30mm Marking Element Applicator	5 pieces	130.00
Marking Tools With Handle				
	119M/15	15mm Marking Element Applicator with handle	1 piece	37.00
	119M/30	30mm Marking Element Applicator with handle	1 piece	43.00
Removal Hook				
	120	Marking Element Removal Hook	5 pieces	92.00
Spark Crimp Tool				
	774	Ratchet crimper for spark pins with ratchet for 0.5mm ² - 16mm ²	1 piece	695.00
Spark Wire Stripper				
	780	Stripping and cutting wire up to 4mm ²	1 piece	127.00

ITEM	PRODUCT CODE	CABLE OD	LENGTH	QTY	PRICE
<p>Transparent sleeves for wire markers 100 Series</p>  <p><i>One size sleeve for one size cable for a firmer fit.</i></p>	101/10	1 - 2mm (.039" - .078") 18-20 AWG	10mm	1000 pieces	69.00
	101/15		15mm	1000 pieces	82.00
	101/18		18mm	1000 pieces	127.00
	101/23		23mm	1000 pieces	127.00
	101/30		30mm	500 pieces	82.00
	101/40		40mm	500 pieces	92.00
	101/MT		25 Metre roll	1 roll	128.00
	102/10	2 - 3mm (.078" - .11") 14-16 AWG	10mm	1000 pieces	81.00
	102/15		15mm	1000 pieces	90.00
	102/18		18mm	1000 pieces	137.00
	102/23		23mm	1000 pieces	137.00
	102/30		30mm	500 pieces	90.00
	102/40		40mm	500 pieces	101.00
	102/MT		25 Metre roll	1 roll	140.00
	103/10**	3 - 4mm (.11" - .15") 10-12 AWG	10mm	1000 pieces	81.00
	103/15**		15mm	1000 pieces	92.00
	103/18**		18mm	500 pieces	70.00
	103/23**		23mm	500 pieces	70.00
	103/30**		30mm	500 pieces	90.00
	103/40**		40mm	200 pieces	43.00
103/MT**		25 Metre roll	1 roll	140.00	
104/10	4 - 5mm (.15" - .19") 5-6 AWG	10mm	1000 pieces	98.00	
104/15		15mm	1000 pieces	112.00	
104/23		23mm	500 pieces	82.00	
104/30		30mm	500 pieces	112.00	
104/MT		25 Metre roll	1 roll	168.00	
105/10	5 - 6mm (.19" - .23") 3-4 AWG	10mm	1000 pieces	90.00	
105/15		15mm	1000 pieces	112.00	
105/30		30mm	500 pieces	112.00	
105/MT		25 Metre roll	1 roll	168.00	
106/10	6 - 7mm (.23" - .27") 2 AWG	10mm	500 pieces	51.00	
106/15		15mm	500 pieces	59.00	
106/23		23mm	200 pieces	43.00	
106/30		30mm	200 pieces	44.00	
106/MT		25 Metre roll	1 roll	168.00	
107/10	7 - 8mm (.27" - .31") 1 AWG	10mm	500 pieces	51.00	
107/15		15mm	500 pieces	62.00	
107/30		30mm	200 pieces	48.00	
107/MT		25 Metre roll	1 roll	180.00	
108/10	8 - 10mm (.31" - .39")	10mm	500 pieces	51.00	
108/15		15mm	500 pieces	62.00	
108/23		23mm	200 pieces	43.00	
108/30		30mm	200 pieces	50.00	
108/MT		25 Metre roll	1 roll	180.00	
109/10	10 - 12mm (.39" - .47")	10mm	500 pieces	53.00	
109/15		15mm	500 pieces	82.00	
109/30		30mm	200 pieces	65.00	
110/15	12 - 14mm (.47" - .55")	15mm	500 pieces	82.00	
110/30		30mm	200 pieces	65.00	
111/15	14 - 16mm (.55" - .62")	15mm	200 pieces	41.00	
111/30		30mm	100 pieces	41.00	
111/MT		500mm bars	40 bars	247.00	
112/15	16 - 18mm (.62" - .70")	15mm	200 pieces	41.00	
112/30		30mm	100 pieces	41.00	
113/15	18 - 20mm (.70" - .78")	15mm	200 pieces	41.00	
114/15	20 - 22mm (.78" - .86")	15mm	100 pieces	20.00	
115/15	22 - 25mm (.86" - .98")	15mm	100 pieces	29.00	
116/15	25 - 30mm (.98" - 1.18")	15mm	50 pieces	17.00	
116/30		30mm	50 pieces	30.00	

** Suitable for Cat5 cable

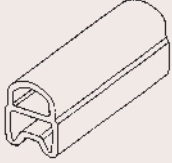
TRANSPARENT SLEEVES

ITEM	PRODUCT CODE	CABLE OD	LENGTH	QTY	PRICE
Transparent sleeves for wire markers 200 series 	201/10	1.5 - 2.5mm 16-20 AWG	10mm	1000 pieces	69.00
	201/15U		15mm	1000 pieces	81.00
	201/30		30mm	500 pieces	48.00
	202/15U	2 - 4mm 10-14 AWG	15mm	1000 pieces	48.00
	203/15U	4 - 7mm 2-6 AWG	15mm	500 pieces	51.00
	204/15	6 - 10mm	15mm	200 pieces	34.00
	205/15	10 - 14mm	15mm	100 pieces	23.00
	206/15	14 - 22mm	15mm	100 pieces	39.00
	208/15	30 - 35mm (1.18" - 1.37")	15mm	50 pieces	28.00
	209/15	35 - 40mm (1.37" - 1.57")	15mm	50 pieces	64.00
<p><i>Great when you need sleeves that fit a wider range of cable OD sizes</i></p>					
Snap-on Sleeves 	301/10	2 - 3.5mm (.78" - .13") 14-18 AWG	10mm	1000 pieces	81.00
	301/15		15mm	1000 pieces	90.00
	301/23		23mm	500 pieces	70.00
	301/30		30mm	500 pieces	90.00
	302/15**	2.8 - 5mm (.11" - .19") 10-12 AWG	15mm	1000 pieces	131.00
	302/23**		23mm	500 pieces	102.00
	302/30**		30mm	500 pieces	131.00
	303/15**	5 - 8mm (.19" - .31") 6-8 AWG	15mm	500 pieces	82.00
	303/30**		30mm	200 pieces	68.00
	304/15	8 - 10mm (.31" - .39") 2-4 AWG	15mm	500 pieces	98.00
304/30		30mm	200 pieces	82.00	
<p><i>Perfect for marking wires after they have been terminated</i></p>					
Transparent Sleeve for Electronic Wires 	190/10	0.6 - 1.2mm (.023" - .047") 20-28 AWG	10mm	1000 pieces	48.00
	190/15		15mm	1000 pieces	60.00

** Suitable for Cat5 cable

HALOGEN FREE TRANSPARENT SLEEVES

Order online now at grafoplast.com

ITEM	PRODUCT CODE	CABLE OD	LENGTH	QTY	PRICE
Halogen Free Transparent Sleeves 	101HF/15	1-2mm	15mm	500 pieces	98.00
	101HF/30		30mm	500 pieces	98.00
	202HF/15	2-4mm	15mm	1000 pieces	126.00
	202HF/30		30mm	500 pieces	126.00
	903HF/15	5-11mm	15mm	500 pieces	80.00
	903HF/30		30mm	200 pieces	62.00

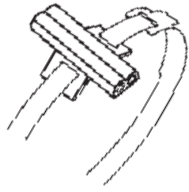
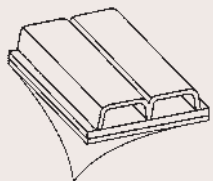
Halogen Free Sleeve for Cable Tie



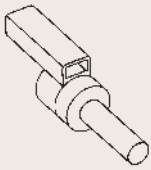
130HF/30	Use with up to 6mm wide cable ties	30mm	200 pieces	69.00
----------	------------------------------------	------	------------	-------



DUAL RECESS SLEEVES

ITEM	PRODUCT CODE	CABLE OD	LENGTH	QTY	PRICE
Dual Recess Cable Tie Sleeve 	830/30	For use with cable ties up to 6mm wide	30mm	200 pieces	60.00
Dual Recess Adhesive Label 	840/15		15mm	200 pieces	68.00
	840/30		30mm	100 pieces	68.00



ITEM	PRODUCT CODE	CABLE OD	PIN LENGTH	COLOUR	QTY	PRICE
Spark Crimp-on Pins Standard/Short Series  15mm marking recess	710/05	0.50mm ² 22-26 AWG wire	9mm	Orange	200 pieces	60.00
	710/07	0.75mm ² 20 AWG wire	9mm	Neutral	200 pieces	68.00
	710/10	1.0mm ² 18 AWG wire	9mm	Yellow	200 pieces	70.00
	710/15	1.5mm ² 16 AWG wire	9mm	Red	200 pieces	74.00
	710/25	2.5mm ² 14 AWG wire	12mm	Blue	200 pieces	80.00
	710/40	4.0mm ² 12 AWG wire	12mm	Neutral	100 pieces	48.00
	710/60	6.0mm ² 10 AWG wire	12mm	Green	100 pieces	50.00
	710/100	10.0mm ² 8 AWG wire	12mm	Brown	100 pieces	59.00
Spark Crimp-on Pins Standard/Long Series  15mm marking recess	711/05	0.50mm ² 22-26 AWG wire	14mm	Orange	200 pieces	80.00
	711/07	0.75mm ² 20 AWG wire	14mm	Neutral	200 pieces	82.00
	711/10	1.0mm ² 18 AWG wire	14mm	Yellow	200 pieces	87.00
	711/15	1.5mm ² 16 AWG wire	14mm	Red	200 pieces	90.00
	711/25	2.5mm ² 14 AWG wire	17mm	Blue	200 pieces	92.00
	711/40	4.0mm ² 12 AWG wire	17mm	Neutral	100 pieces	60.00
	711/60	6.0mm ² 10 AWG wire	17mm	Green	100 pieces	62.00
	711/100	10.0mm ² 8 AWG wire	17mm	Brown	100 pieces	69.00

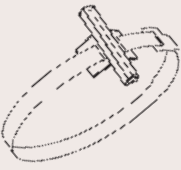
ADHESIVE LABELS

ITEM	PRODUCT CODE	DESCRIPTION	LENGTH	QTY	PRICE
Adhesive Labels 	140/15	Adhesive labels	15mm	500 pieces	116.00
	140/30	Adhesive labels	30mm	200 pieces	92.00
Adhesive Labels with Fixing Hole 	142/15	With 1 fixing hole	15mm	500 pieces	135.00
Clip-in Label for 161/MT Adhesive Channel 	150/30	For use with 161/MT	30mm	200 pieces	70.00
Adhesive Channel for 150 Series Clip-In Label 	161/MT	For use with 150 series	500mm bars	20 bars	80.00

TERMINAL, CONTACT AND RELAY MARKERS

ITEM	PRODUCT CODE	BLOCK TYPE	LENGTH	QTY	PRICE
Clip-on Terminal Markers 	175A/15	Cabur	15mm	200	69.00
	175C/15	Entrelec	15mm	200	69.00
	175E/15	Phoenix/Allen Bradley 1492-HM	15mm	200	69.00
	175H/15	Woertz/Allen Bradley 1492-W	15mm	200	69.00
	175L/15	Weidmuller Sak/WDU	15mm	200	69.00

CABLE TIE SLEEVES

ITEM	PRODUCT CODE	DESCRIPTION	LENGTH	QTY	PRICE
Cable Tie Sleeve 	130/23	For use with cable ties up to 6mm wide	23mm	200 pieces	48.00
	130/30	For use with cable ties up to 6mm wide	30mm	200 pieces	51.00
	130HF/30	Halogen free for use with cable ties up to 6mm wide	30mm	200 pieces	69.00
Dual Recess Cable Tie Sleeve 	830/30	For use with cable ties up to 6mm wide	30mm	200 pieces	60.00



ORDER ONLINE NOW
GRAFOPLAST.COM

EVO MAX²

**COMPLETELY
COMPATIBLE**

**TRASP
SYSTEM**

DIY Thermal Print System

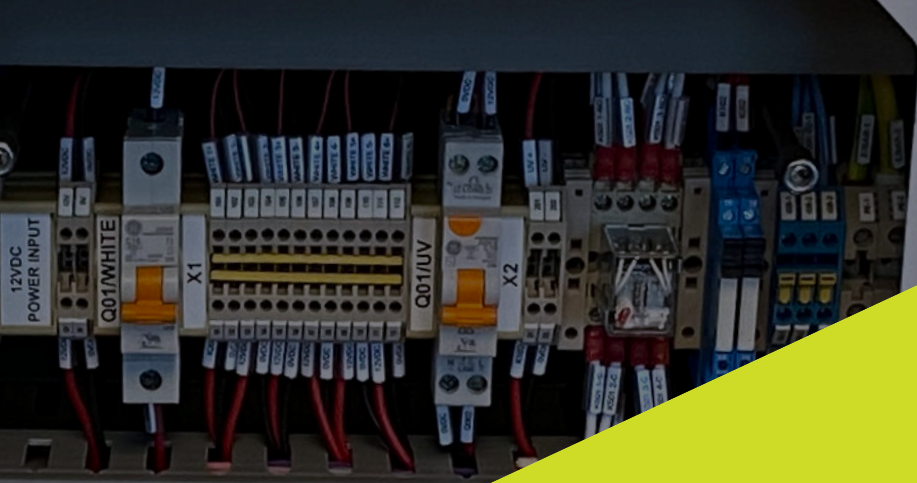
The Grafoplast EVOMAX thermal print system efficiently and quickly creates high quality, durable identification tags, strips and labels for wires, cables, terminal blocks, push buttons, devices and other components.

Applying a thermal transfer marking technique using special Grafoplast UV stabilised ribbons ensures a high quality transfer of the print instantly, so markers are ready to use right away!

Save time and convert your Autocad files or copy and paste directly from any windows application into the Simplo software, Its that simple!



- Thermal transfer technology
- Quality high resolution print
- Low maintenance
- Print dries instantly
- No wastage
- Backup support eliminates downtime

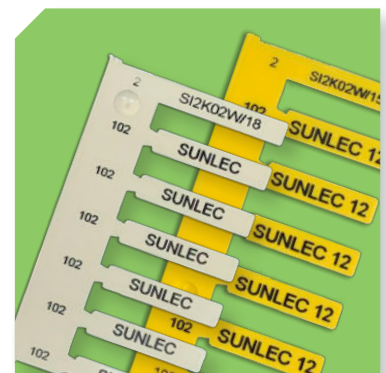


WIRE MARKERS

Compatible with Grafoplast transparent sleeves.

SIZE	DESCRIPTION	MATERIAL	WHITE	YELLOW	BOX QTY
10 x 4	6 Tags per backbone - 6 backbones per module	PC	SI2K02W/10N	SI2K02Y/10N	1152
15 x 4	6 Tags per backbone - 4 backbones per module	PC	SI2K02W/15N	SI2K02Y/15N	768
18 x 4	6 Tags per backbone - 3 backbones per module	PC	SI2K02W/18N	SI2K02Y/18N	576
30 x 4	10 Tags per backbone - 2 backbones per module	PC	SI2K02W/30 *	SI2K02Y/30 *	600

* SI2K02/30 requires the SI2K0023 plate available upon request



CABLE MARKERS (SLEEVE REQUIRED)

Cable marker tags are compatible with transparent PTEF, SI1001, SIHFC1 sleeves and Sunlec cable ties. Sleeves purchased separately.

SIZE	DESCRIPTION	MATERIAL	WHITE	YELLOW	BOX QTY
20 x 9.3	Suitable for SI1001-SIHFC1 Cable Tie Sleeve	PVC	SI2K1001W	SI2K1001Y	2400
35 x 10	Suitable for 35mm PTEF Cable Sleeves	PVC	SI2K1035W	SI2K1035Y	500
67 x 10	Suitable for 70mm PTEF Cable Sleeves	PVC	EVO1067W	EVO1067Y	270
215 x 10	Suitable for PTEF sleeves	PMMA	SI2K804W/215X*	SI2K804Y/215X*	80

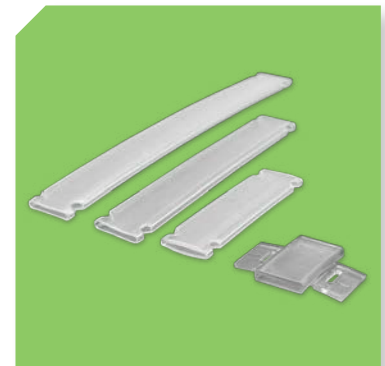
* Can be customised to 35mm, 70mm or 105mm lengths to suit PTEF sleeves



CABLE MARKER SLEEVES

Transparent cable marker sleeves for tags

SIZE	DESCRIPTION	MATERIAL	CODE	BOX QTY
20 x 10	Cable marker sleeve to suit 20mm tag	PVC	SI1001	240
20 x 10	Cable marker sleeve to suit 20mm tag (Halogen Free)	PE	SIHFC1	240
35 x 10	Cable marker sleeve to suit 35mm tag (Halogen Free)	PE	PTEF10-35	500
70 x 10	Cable marker sleeve to suit 70mm tag (Halogen Free)	PE	PTEF10-70	500
105 x 10	Cable marker sleeve to suit 105mm tag (Halogen Free)	PE	PTEF10-105	250



CABLE MARKER (NO SLEEVE REQUIRED)

Cable marker tags are compatible with Sunlec cable ties.

SIZE	DESCRIPTION	MATERIAL	WHITE	YELLOW	BOX QTY
52 X 11	Cable marker (four lateral holes for cable tie max 3.5mm width)	PC/ABS	(Grey)	SI2K030E	200
54 X 11	Cable marker (four lateral holes for cable tie max 3.5mm width)	PC/ABS		SI2K030Y	200
80 X 15	Cable marker (four lateral holes for cable tie max 4.8mm width)	PVC	SI2KCT1580W		180
80 X 15	Cable marker (four lateral holes for cable tie max 4.8mm width)	PVC		EVOCT1580Y	108



AUTOMATIC TERMINAL TAGS

AF terminal tags can only be printed with the automatic KITMAX upgrade and compatible feeder plate. Requires SI2K0014NP feeder plate, available upon request.

SIZE	DESCRIPTION	MATERIAL	WHITE	BOX QTY
10 x 5	Wago 280, Phoenix Contact, ABB Entrelec - NP2	PC	SI2KAF5010CW	1056
10 x 5	Weidmuller, Wago 870, Contaclip - NP4	PC	SI2KAF5010LWK	1056
10 x 5	ABB Entrelec M, D, ADO series - NP6	PC	SI2KAF5010RW	1056
10 x 5	Wago Top Job - NP4	PC	SI2KAF5210NW	90
10 x 6	Cabur - NP5	PC	SI2KAF6010BW	585
10 x 6	ABB Entrelec M, D, ADO series - NP6	PC	SI2KAF6010RW	858

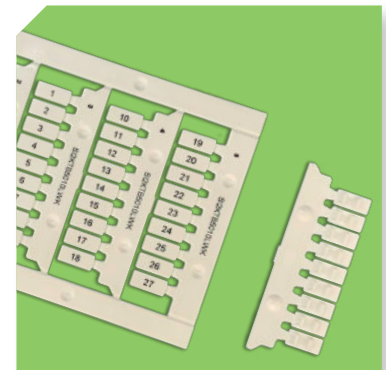




TERMINAL TAGS/STRIPS

TB terminal tags are suitable for a wide range of terminal blocks using the SI2K0017 universal terminal plate which is supplied with the EVOMAX printer.

SIZE	DESCRIPTION	MATERIAL	WHITE	BOX QTY
10 x 5	Weidmuller, Wago, Contactclip	PC	SI2KTB5010LWK	540
9 x 5	Phoenix	PC	SI2KTB5209EW	540
10 x 5	Phoenix, Wago, ABB Entrellec	PC	SI2KTB5210CW	540
10 x 5	Legrand, Wieland, Telemecanique	PC	SI2KTB6010DW	540
9 x 5	Rockwell Automation, Woertz	PC	SI2KTB6010HW	540
10 x 5	Siemens	PC	SI2KTB6510GW	420
12 x 5	Cabur	PC	SI2KTB6512BW	420
130 x 6.3	Strip for Phoenix ST Series	PVC	SI2K06130W	60



TERMINAL GROUP MARKERS

Suitable for terminal group markers.

SIZE	DESCRIPTION	MATERIAL	WHITE	BOX QTY
40 X 07	Non adhesive tag suitable for (Terminal group marker)	PVC	\$\$SI2K0740W	1400
40 X 16	Non adhesive tag suitable for (Terminal group marker)	PVC	\$\$SI2K1640W	600



PVC TAGS – NON ADHESIVE

Tags suitable for a wide range of applications. Compatible with sleeves, tag holders, push buttons and channels.

SIZE	DESCRIPTION	MATERIAL	WHITE	YELLOW	METALLIC	BOX QTY
40 x 07	Suitable for (Terminal group marker)	PVC	\$\$SI2K0740W			1400
40 x 07	Suitable for (Terminal group marker)	PVC	SI2K0746W			1120
40 x 16	Suitable for (Terminal group marker)	PVC	\$\$SI2K1640W			600
20 x 9.3	Suitable for SI1001-SIHFC1 Cable Tie Sleeve	PVC	SI2K1001W	SI2K1001Y		2400
35 x 10	Suitable for SIT0B010 Channel and 35mm PTEF Cable Sleeves	PVC	SI2K1035W	SI2K1035Y		500
67 x 10	Suitable for SIT0B010 Channel and 70mm PTEF Cable Sleeves	PVC	EVO1067W	EVO1067Y	EVO1067B	270
17 x 15	Suitable for SIT0B15 Channel	PVC	SI2K1517W			1560
27 x 15	Suitable for SIT0A06-SIT0B05/06-SIT0B07X-SIT0B15MT	PVC	EVO1527W			264
50 x 15	Suitable for SIT0A07-SIT0B15MT	PVC	SI2K1550W			99
67 x 15	Suitable for SIT0A08-SIT0B15MT	PVC	SI2K1567W			100
70 x 30	Suitable for panels & equipment	PVC	EVO3070W			33
90 x 40	Suitable for panels & equipment	PVC	SI2K4090W			15
100 x 60	Suitable for panels & equipment	PVC	EVO60100W			22
100 x 60	Suitable for panels & equipment	PVC		SI2K60100Y		15
100 x 60	Suitable for panels & equipment	PVC	SI2K60100B			15





PVC TAGS - ADHESIVE

These tags are suitable for panel and equipment identification.

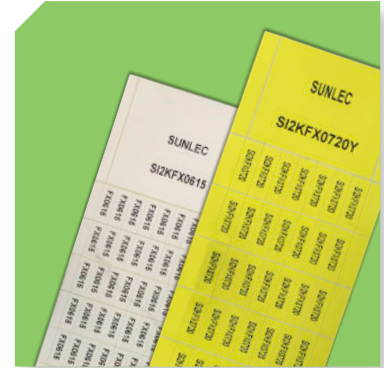
SIZE	DESCRIPTION	MATERIAL	WHITE	YELLOW	BOX QTY
20 x 7	Suitable for panels & equipment	PVC	EVO40720W		1260
20 x 7	Suitable for panels & equipment	PVC		SI2K40720Y	1750
17 x 8	Suitable for panels & equipment	PVC	EVO40817W		1320
20 x 9	Suitable for panels & equipment	PVC	SI2K40920W		1500
25 x 10	Suitable for panels & equipment	PVC	SI2K41025W		600
17 x 15	Suitable for panels & equipment	PVC	EVO41517W		396
27 x 15	Suitable for panels & equipment	PVC	EVO41527W		264
50 x 15	Suitable for panels & equipment	PVC	EVO41550W		132
67 x 15	Suitable for panels & equipment	PVC	EVO41567W		99
70 x 30	Suitable for panels & equipment	PVC	EVO43070W		33
90 x 40	Suitable for panels & equipment	PVC	EVO44090W		22
100 x 60	Suitable for panels & equipment	PVC	EVO460100W		22
100 x 60	Suitable for panels & equipment	PVC		SI2K460100Y	15



VINYL LABELS – ADHESIVE

Suitable for equipment identification and ensures good adherence to curved surfaces.

SIZE	DESCRIPTION	MATERIAL	WHITE	YELLOW	BOX QTY
15 x 6	Suitable for a variety of equipment and components	VINYL	SI2KFX0615W		6084
20 x 7	Suitable for a variety of equipment and components	VINYL	SI2KFX0720W		3500
15 x 9	Suitable for a variety of equipment and components	VINYL	SI2KFX0915W	SI2KFX0915Y	3510



PVC STRIPS – NON ADHESIVE

Suitable for distribution panel identification.
Can be customised using the Grafoplast Simplo software.

SIZE	DESCRIPTION	MATERIAL	WHITE	BOX QTY
215 x 15	Suitable for SITOB15/MT channel	PVC	SI2K15215W	40
430 x 15	Suitable for SITOB15/MT channel	PVC	SI2K15430W	40
430 x 24	Non adhesive strip	PVC	SI2K855W/430	60
430 x 24	Non adhesive strip	PVC	SI2K24430W	40



PVC STRIPS – ADHESIVE

Suitable for distribution panel identification.
Can be customised using the Grafoplast Simplo software.

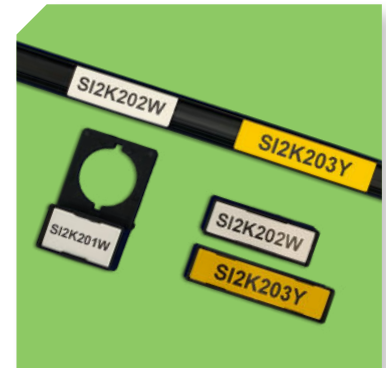
SIZE	DESCRIPTION	MATERIAL	WHITE	YELLOW	BOX QTY
215 x 15	Suitable for panels & equipment	PVC	SI2K415215W		40
215 x 20	Suitable for panels & equipment	PVC	SI2K420215W		40
430 x 20	Suitable for panels & equipment	PVC	SI2K420430W		40



PMMA TAGS FOR HOLDERS – NON ADHESIVE

Suitable for a wide range of applications. Utilise with sleeves, tag holders, push buttons and channels.

SIZE	DESCRIPTION	MATERIAL	WHITE	YELLOW	METALLIC	BOX QTY
27 x 15	Suitable for SIT0A06 - SIT0B05/06 - SIT0B07X - SIT0B15/MT	PMMA	SI2K201W			192
50 x 15	Suitable for SIT0A07 - SIT0B15/MT	PMMA	SI2K202W			96



PMMA NAME PLATE TAGS – NON ADHESIVE

Tags can be applied directly and secured using the pre-cut rivet holes.

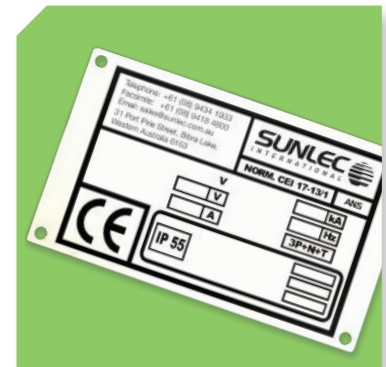
SIZE	DESCRIPTION	MATERIAL	WHITE	BOX QTY
80 x 25	Suitable for panels & equipment (4 rivet holes)	PMMA	SI2KT2580B/W	48
120 x 30	Suitable for panels & equipment (4 rivet holes)	PMMA	SI2KT30120B/W	50
180 x 50	Suitable for panels & equipment (4 rivet holes)	PMMA	SI2KT50180B/W	30



PMMA NAME PLATE TAGS – ADHESIVE

Tags can be applied directly using adhesive or the pre-cut rivet holes.

SIZE	DESCRIPTION	MATERIAL	WHITE	YELLOW	METALLIC	BOX QTY
70 x 30	Suitable for panels & equipment (4 rivet holes)	PMMA	SI2K301W		SI2K301M	20
90 x 40	Suitable for panels & equipment (4 rivet holes)	PMMA	SI2K401W			15
100 x 60	Suitable for panels & equipment (4 rivet holes)	PMMA	SI2K601W			15



PMMA STRIPS – NON ADHESIVE

Suitable for a wide range of applications. Compatible with sleeves and channels.
Can be customised using the Grafoplast Simplo software.

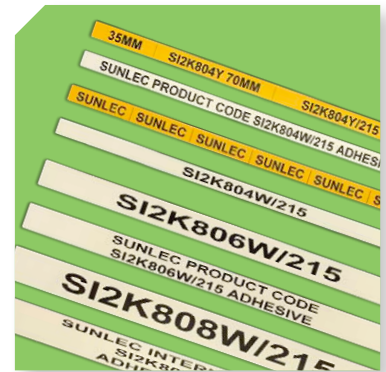
SIZE	DESCRIPTION	MATERIAL	WHITE	YELLOW	BOX QTY
215 x 10	Suitable for PTEF sleeves & SITOB10/MT channel	PMMA	SI2K804W/215X	SI2K804Y/215X	80



PMMA STRIPS – ADHESIVE

Suitable for panel identification.
Can be customised using the Grafoplast Simplo software.

SIZE	DESCRIPTION	MATERIAL	WHITE	YELLOW	BOX QTY
215 x 10	Suitable for panels, equipment and components	PMMA	SI2K804W/215		80
215 x 20	Suitable for panels, equipment and components	PMMA	SI2K808W/215		40
430 x 20	Suitable for panels, equipment and components	PMMA	SI2K808W/430		40



R26
START
DANGER
**ELECTRICAL HAZARD
AUTHORISED
PERSONNEL ONLY**

TAG HOLDERS

Can be mounted using their high performance adhesive or screw holes.
Tags can be easily inserted by clipping into place.

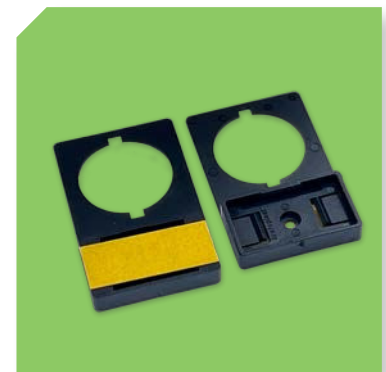
SIZE	DESCRIPTION	MATERIAL	BLACK	BOX QTY
20 x 9	Adhesive tag holder - suitable for SI2K1001	PVC	SI1002	240
30 x 17	Adhesive tag holder - suitable for SI2K201 / SI2K1527	PA/ACR	SIT0A06X	192
70 x 17	Adhesive tag holder - suitable for SI2K203 / SI2K1567	PA/ACR	SIT0A08	96



PUSH BUTTON HOLDERS

Can be mounted using their high performance adhesive or screw holes.
Tags can be easily inserted by clipping into place.

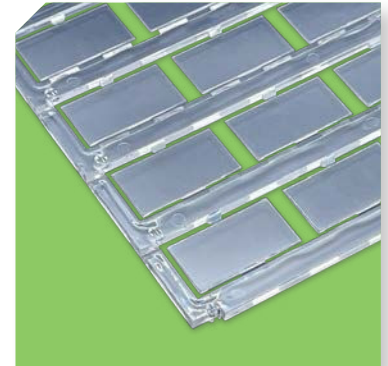
SIZE	DESCRIPTION	MATERIAL	BLACK	BOX QTY
22.5	Adhesive push buttons - suitable for SI2K201 / SI2K1527	PA/ACR	SIT0B05	192
22.5	Non-Adhesive push buttons - suitable for SI2K201 / SI2K1527	PA/ACR	SIT0B05X	192
22.5	Non-Adhesive push buttons - suitable for SI2K1567	PA/ACR	SIT0B08	96
27.5	Non adhesive push buttons - suitable for SI2K201 / SI2K1527	PA/ACR	SIT0B07X	192



CLEAR PROTECTIVE COVERS

Clear protective covers can be used when extra protection is required with tag or push button holders.

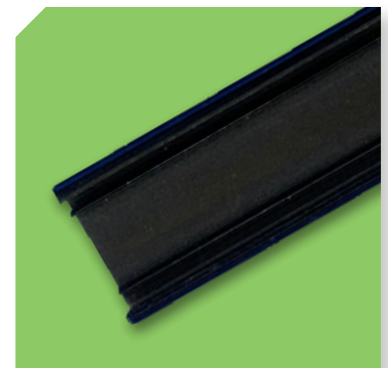
SIZE	DESCRIPTION	MATERIAL	CLEAR	BOX QTY
27 x 15	Suitable for SIT0A06, SIT0B05	PC	SIT0V01	192
104 x 60	Suitable for SI2K60100	PC	SIT0V601	10



CHANNELS

Can be mounted using their high performance adhesive. Tags or strips can be easily inserted by clipping into place.

SIZE	DESCRIPTION	MATERIAL	BLACK	BOX QTY
1000 x 15	Adhesive channel - suitable for 15mm height tags or strips	PA/ACR	SIT0B15/MT	35



ACCESSORIES AND CONSUMABLES

RIBBONS

PRODUCT CODE	DESCRIPTION	SIZE	COLOR	QTY
SI2KSNB/B	Black Ribbon	130 metres	Black	1
SI2KRBN/R	Red Ribbon	130 metres	Red	1
SI2KRBN/RS	Red Ribbon (Stack) - Suitable with Stack feed items only	130 metres	Red	1
SI2KRBN/W	White Ribbon	110 metres	White	1

Blue and green ribbons available on request

CLEANING CASSETTE

PRODUCT CODE	DESCRIPTION	SIZE	QTY
SI2KCLEAN	Cleaning Cassette	8 metres	1

AUTOMATIC FEEDER KIT

Enables automatic printing of wire markers.
SI2K02W/10N-10NHF, SI2K02W/15N-15NHF, SI2K02W/18N-18NHF.
SI2K02W/30 adaptors and Feeder plates for AF-terminal tags available upon request.

PRODUCT CODE	DESCRIPTION	QTY
KITMAX	Automatic Feeder Kit Includes: SI2K0014NP1, SI2K0013N, SI2K0016	1

ACCESSORIES AND CONSUMABLES

PLATES

PRODUCT CODE	DESCRIPTION	QTY
EVO0013	Automatic stack feeder for tags	1
SI2K0013NAD	Adaptor set for 30mm tags (SI2K02W/30-SI2K02W/30HF)	1
SI2K0017	Universal single feed plate for TB terminal block tags	1
SI2K0021	Single feed plate for wire markers (10mm, 15mm, 18mm)	1
EVOPL0023	Single feed plate for 30mm wire markers (SI2K02W/30)	1
SI2K0014NP1*	Plate for wire markers 10mm, 15mm, 18mm, 30mm	1
SI2K0014NP2*	Plate for automatic terminal block tags SI2KAF5010CW	1
SI2K0014NP4*	Plate for automatic terminal block tags SI2KAF5010LWK - SI2KAF5210NW	1
SI2K0014NP5*	Plate for automatic terminal block tags SI2KAF6010BW	1
SI2K0014NP6*	Plate for automatic terminal block tags SI2KAFRW series - SI2KAFSW series	1
SI2K0016	Printer support base Required when using Stacker and NP feeder Plate	1
SI2K0006	Replacement SI2K Thermal Head	1

*Automatic feed plate for use in conjunction with SI2K0013N stack feeder



Metal Detectable Marking

Discover Grafoplast's metal detectable product range for the food and beverage processing, pharmaceutical and cosmetic industries. Printed on the EVOMAX thermal printer, these products are designed to satisfy international regulations and comply with the HACCP System.

The detection of foreign bodies during production and packaging phases is essential in environments where cleaning, hygiene and safety are essential requirements.

Our range of metal detectable marking products utilise a corrosion resistant, metal filler inserted into the tags, allowing them to be reliably identified by metal detectors. The blue colour of the material is designed to facilitate visual inspection by operator and/or by camera.

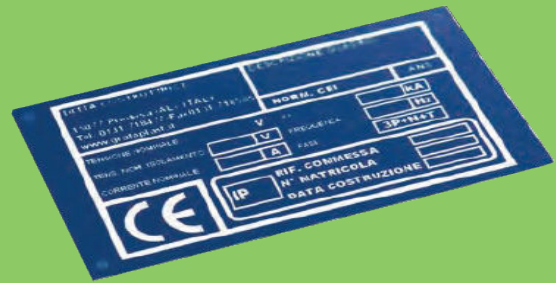
The raw material comprising Grafoplast's metal detectable product range is compliant with EU 10/2011 Reg.

Products available on request.





WIRE MARKERS



NAME PLATES



TERMINAL BLOCK TAGS

(single feeder)



PUSH BUTTON HOLDERS



CABLE MARKERS

(no sleeve required)

Illuminated Marking Is Here

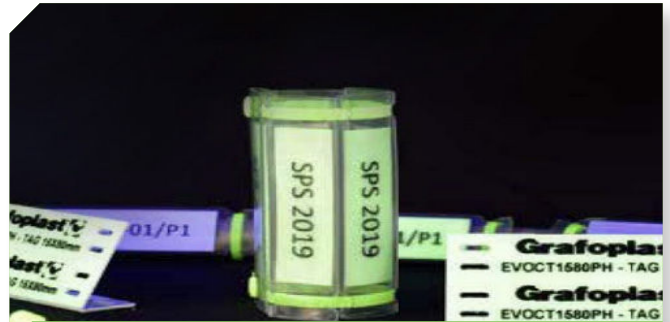
The new LabelPhos series is designed with high-intensity 410 μm phosphorescent pigments to absorb energy from a light source and slowly release it at a low intensity. Illumination remains visible for up to 12 hours from exposure.

Available on request.





ADHESIVE TAGS



**ADHESIVE PVC
MODULAR STRIPS**



TAGS FOR CABLE TIES



ADHESIVE PVC TAGS



**ADHESIVE TAGS FOR
PUSH BUTTONS**



IN HOUSE MARKING
SERVICE

COMPLETELY
COMPATIBLE



In-House Marking Service

We can do the work for you. Once you have planned the job, simply provide us with your list of numbers for printing. The quickest and easiest way to send this to us is via email in our preferred spreadsheet format. There is no risk of error and turn around time is fast—even on large orders.

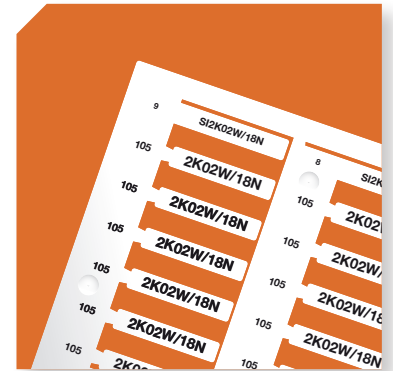
- 1  **Send us your numbers**
- 2  **We'll do the work**
- 3  **And deliver to you for free**

WIRE MARKERS

(available in white or yellow, Halogen Free available on request)

EVO MAX

SIZE	MATERIAL	WHITE	YELLOW
10 x 4	PC	SI2K02W/10N	SI2K02Y/10N
15 x 4	PC	SI2K02W/15N	SI2K02Y/15N
18 x 4	PC	SI2K02W/18N	SI2K02Y/18N
30 x 4	PC	SI2K02W/30 *	SI2K02Y/30 *



CABLE MARKERS

(available in white or yellow)

EVO MAX

SIZE	DESCRIPTION	MATERIAL	WHITE	YELLOW
20 x 9.3	Suitable for SI1001-SIHFC1 Cable Tie Sleeve	PVC	SI2K1001W	SI2K1001Y
35 x 10	Suitable for 35mm PTEF Cable Sleeves	PVC	SI2K1035W*	SI2K1035Y*
67 x 10	Suitable for 70mm PTEF Cable Sleeves	PVC	EVO1067W*	EVO1067Y*



* Comes complete, inserted into PTEF sleeve

CABLE MARKER (NO SLEEVE REQUIRED) **EVO MAX**

Cable marker tags are compatible with Sunlec cable ties.

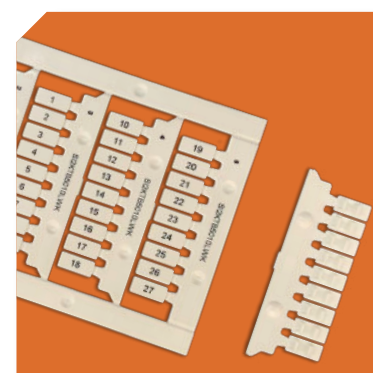
SIZE	DESCRIPTION	MATERIAL	WHITE	YELLOW
54 X 11	Cable marker (four lateral holes for cable tie max 3.5mm width)	PC/ABS		SI2K030Y
80 X 15	Cable marker (four lateral holes for cable tie max 4.8mm width)	PVC	SI2KCT1580W	
80 X 15	Cable marker (four lateral holes for cable tie max 4.8mm width)	PVC		EVOCT1580Y



TERMINAL TAGS/STRIPS **EVO MAX**

Pre-printed TB terminal tags are suitable for a wide range of terminal blocks.

SIZE	DESCRIPTION	MATERIAL	WHITE
10 x 5	Weidmuller, Wago, Contaclip	PC	SI2KTB5010LWK
9 x 5	Phoenix	PC	SI2KTB5209EW
10 x 5	Phoenix, Wago, ABB Entrelec	PC	SI2KTB5210CW
10 x 5	Legrand, Wieland, Telemecanique	PC	SI2KTB6010DW
9 x 5	Rockwell Automation, Woertz	PC	SI2KTB6010HW
10 x 5	Siemens	PC	SI2KTB6510GW
12 x 5	Cabur	PC	SI2KTB6512BW
130 x 6.3	Phoenix ST Series	PVC	SI2K06130W



METRIC TO US CONVERSION

(ONLY TO BE USED IN CONJUNCTION WITH THIS CATALOG)

mm	metres	inches	feet
0.5	-	0.019	-
0.75	-	0.029	-
1	-	0.039	-
1.5	-	0.059	-
2	-	0.078	-
2.5	-	0.098	-
3	-	0.12	-
4	-	0.16	-
5	-	0.20	-
6	-	0.24	-
7	-	0.27	-
8	-	0.31	-
9	-	0.35	-
10	-	0.39	-
12	-	0.47	-
14	-	0.55	-
15	-	0.59	-
16	-	0.63	-
17	-	0.67	-
18	-	0.71	-
20	-	0.79	-
22	-	0.87	-
25	-	0.98	-
30	-	1.18	-
170	-	6.69	-
205	-	8.07	-
220	-	8.66	-
400	-	15.75	-
500	-	19.69	-
-	10	-	33
-	20	-	65
-	25	-	82

DIAMETER - CABLE SECTIONS CROSS REFERENCE

FOR CABLE SIZE mm²

CODE	OD	0.14	0.25	0.50	0.75	1.00	1.50	2.50	4	6	10	16	25	35	50	70	95	120	150	185	240	300	400	500	
101	1÷2	■	■	■	■	■																			
102	2÷3		■	■	■	■	■																		
103	3÷4			■	■	■	■	■																	
104	4÷5				■	■	■	■	■																
105	5÷6					■	■	■	■	■															
106	6÷7						■	■	■	■	■														
107	7÷8							■	■	■	■	■													
108	8÷10							■	■	■	■	■	■												
109	10÷12						■	■	■	■	■	■	■	■											
110	12÷14							■	■	■	■	■	■	■	■										
111	14÷26									■	■	■	■	■	■	■									
112	16÷18										■	■	■	■	■	■	■								
113	18÷20											■	■	■	■	■	■	■							
114	20÷22												■	■	■	■	■	■	■						
115	22÷25													■	■	■	■	■	■	■	■				
116	25÷30														■	■	■	■	■	■	■	■			
190	0.6÷1.2	■	■																						
201	1.5÷2.5		■	■	■	■	■																		
202	2÷4		■	■	■	■	■	■																	
203	4÷7			■	■	■	■	■	■																
204	6÷10				■	■	■	■	■	■															
205	10÷14					■	■	■	■	■	■														
206	14÷22						■	■	■	■	■	■	■	■	■										
207	22÷30							■	■	■	■	■	■	■	■	■	■	■	■	■	■				
208	30÷35								■	■	■	■	■	■	■	■	■	■	■	■	■	■	■		
209	35÷40									■	■	■	■	■	■	■	■	■	■	■	■	■	■	■	■
301	2÷3.5		■	■	■	■	■	■																	
302	2.8÷5			■	■	■	■	■	■																
303	5÷8				■	■	■	■	■	■															
304	8÷10					■	■	■	■	■	■														
802	2÷4		■	■	■	■	■	■																	
808	8÷10					■	■	■	■	■	■	■	■	■	■										
809	10÷12						■	■	■	■	■	■	■	■	■	■									
810	12÷14							■	■	■	■	■	■	■	■	■	■	■	■	■	■	■	■	■	■
811	14÷16											■	■	■	■	■	■	■	■	■	■	■	■	■	■

All the above data has an approximate value and refers exclusively to the diameters of single-cores. The appreciable differences in outside diameters of similar cable sections, are the result of differences in the thickness of the insulation of the cables. When choosing a sleeve according to cable section, please also refer to specific cable manufacturers data.

CROSS REFERENCE CHART FOR SLEEVE SELECTION

Rubber-covered and Thermoplastic-covered wires and cables. Information on U.S. wires has been obtained from the National Electric Code. Thickness of wire insulation varies by manufacturer and wire type.

size	Types of Wire			Types of Wire			Types of Wire		
	RFH-2, RH, RHH***			TF, THW*, TW			TFN, THHN, THWN		
MCM	SF-2, RHW***								
	(O.D.) Outside Diameter		Grafoplast Sleeve	(O.D.) Outside Diameter		Grafoplast Sleeve	(O.D.) Outside Diameter		Grafoplast Sleeve
	in.	mm	size	in.	mm	size	in.	mm	size
18	.146	3.71	103	.106	2.69	102	.089	2.26	101
16	.158	4.01	104	.118	3.00	102	.100	2.54	102
14	.171	4.34	104	.131	3.33	103	.105	2.67	102
14	.204*	5.18	105	-	-	-	-	-	-
14	-	-	-	.162*	4.11	104	-	-	-
12	.188	4.78	104	.148	3.76	103	.122	3.10	103
12	.221*	5.61	105	-	-	-	-	-	-
12	-	-	-	.179*	4.55	104	-	-	-
10	.242	6.15	106	.168	4.27	104	.153	3.89	103
10	-	-	-	.199*	5.05	105	-	-	-
8	.328	8.33	108	.245	6.22	106	.218	5.54	105
8	-	-	-	.276*	7.01	107	-	-	-
6	.397	10.08	109	.323	8.20	108	.257	6.53	106
4	.452	11.48	109	.372	9.45	108	.328	8.33	108
3	.481	12.22	110	.401	10.19	109	.356	9.04	108
2	.513	13.03	110	.433	11.00	109	.388	9.86	108
1 .588	14.94	111	.508	12.90	110	.450	11.43	109	
1/0	.629	15.98	111	.549	13.94	110	.491	12.47	110
2/0	.675	17.14	112	.595	15.11	111	.537	13.64	110
3/0	.727	18.67	113	.647	16.43	112	.588	14.94	111
4/0	.785	19.94	113	.705	17.91	112	.646	16.41	112
250	.868	22.05	115	.788	20.02	114	.716	18.19	113
300	.933	23.70	115	.843	21.41	114	.771	19.58	113
350	.985	25.02	116	.895	22.73	115	.822	20.88	114
400	1.032	26.21	116	.942	23.93	115	.869	22.07	115
500	1.119	28.42	116	1.029	26.14	116	.955	24.26	115
600	1.233	31.32	208	1.143	29.03	116	1.038	26.87	116
700	1.304	33.12	208	1.214	30.84	208	1.129	28.68	116
750	1.339	34.01	208	1.249	31.72	208	1.163	29.54	116
800	1.372	34.85	209	1.282	32.56	208	1.196	30.38	208
900	1.435	36.45	209	1.345	34.16	208	1.259	31.98	208
1000	1.494	37.95	209	1.404	35.66	209	1.317	33.45	208
1250	1.676	42.57	130/30	1.577	40.66	130	-	-	-
1500	1.801	45.74	130/30	1.702	43.23	130/30	-	-	-
1750	1.916	48.67	130/30	1.817	46.15	130/30	-	-	-
2000	2.021	51.33	130/30	1.922	48.82	130/30	-	-	-

*The dimensions of types RHH and RHW

**Dimensions of THW in sizes No. 14 through No. 8. No. 6 THW and larger is the same dimension as TW.

*** Dimensions of RHH and RHW without outer covering are the same as THW No. 18 through No. 10, Solid; No. 8 and larger stranded.

CROSS REFERENCE CHART FOR SLEEVE SELECTION

Rubber-covered and Thermoplastic-covered wires and cables. Information on U.S. wires has been obtained from the National Electric Code. Thickness of wire insulation varies by manufacturer and wire type.

size	Types of Wire			Types of Wire****			Types of Wire		
AWG	XHHW, ZW**			FEP, FEPB, FEPW, TFE, PF, PFA,			KF-1, KF-2, KFF-1, KFF-2		
MCM				PFAH, PGF, PTF, Z, ZF, ZFF					
	(O.D.) Outside Diameter		Grafoplast Sleeve	(O.D.) Outside Diameter		Grafoplast Sleeve	(O.D.) Outside Diameter		Grafoplast Sleeve
	in.	mm	size	in.	mm	size	in.	mm	size
18	-	-	-	.081	2.06	102	.065	1.65	101
16	-	-	-	.092	2.34	102	.070	1.78	101
14	.129	3.28	103	.105	2.67	102	.083	2.11	102
12	.146	3.71	103	.121	3.07	103	.102	2.59	102
10	.166	4.22	104	.142	3.61	103	.124	3.15	103
8	.241	6.12	106	.206	5.23	105	-	-	-
				(.186)	(4.72)	104			
6	.282	7.16	107	.244	6.20	106			
				(.302)	(7.67)	107			
4	.328	8.33	108	.292	7.42	107			
				(.350)	(8.89)	108			
3	.356	9.04	108	.320	8.13	108			
				(.378)	(9.60)	108			
2	.388	9.86	108	.352	8.94	108			
				(.410)	(10.41)	109			
1	.450	11.43	109	.420	10.67	109			
1/0	.491	12.47	110	.462	11.73	109			
2/0	.537	13.64	110	.498	12.65	110			
3/0	.588	14.94	111	.560	14.22	111			
4/0	.646	16.41	112	.618	15.70	111			
250	.716	18.19	113						
300	.771	19.58	113						
350	.822	20.88	114						
400	.869	22.07	115						
500	.955	24.26	115						
600	1.073	27.25	116						
700	1.145	29.08	116						
750	1.180	29.97	116						
800	1.210	30.73	208						
900	1.270	32.26	208						
1000	1.330	33.78	208						
1250	1.500	38.10	209						
1500	1.620	41.15	130/30						
1750	1.740	44.20	130/30						
2000	1.840	46.73	130/30						

**** The values shown for sizes No. 1 through 4/0 are for TFE and Z only.
 ()The Values in parenthesis are for FEPB, Z, ZF and ZFF only.
 ** No. 14 through No. 2.

Grafoplast at Work

